

GIS & 3D VISUALIZATION

# GEOSPATIAL SERVICES

## GIS DESIGN & MANAGEMENT SOLUTIONS

Whether your ventures are in the public or private sector, Fuscoe's Geospatial Services can help you successfully achieve project or program goals in an efficient, time-saving and cost-effective way.

For clients in the public arena, our tools leverage geospatial technology to collect, inventory, preserve and manage infrastructure data as well as deliver effective GIS stormwater management solutions. These asset management technologies are web-enabled and accessible anywhere, in-house or in the field.

Private clients and developers, meanwhile, utilize our services to identify, organize and implement strategies to streamline development. These resources also assist in addressing environmental constraints while uncovering new opportunities on the project site. Fuscoe's advanced analytics uncover planning, design and sustainability issues for easy resolution long before construction begins.

Our broad spectrum of geospatial services and customized tools provide valuable location-based data and analysis for intelligent decision-making in the following areas:

**ASSET MANAGEMENT** »

**SPATIAL ANALYSIS & MODELING** »

**SUSTAINABILITY** »

**WATER RESOURCES** »

For more information please contact:

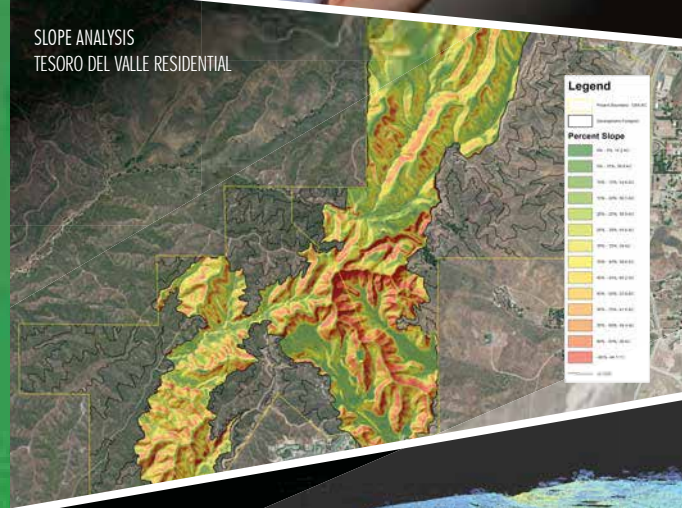
**MIKE IJAMS**  
GIS Manager  
mijams@fuscoe.com  
949.474.1960



GIS UTILITIES  
LONG BEACH BLVD. SPECIFIC PLAN



MOBILE GIS APP  
CITY OF YOURBA LINDA



3D LIDAR LASER SCAN  
SAN MANUEL BAND OF  
MISSION INDIANS

- civil engineering
- survey & mapping
- stormwater management
- sustainable site design
- geospatial technology



**NB1-4-71**

Designation: NB1-4-71  
Established: 02/19/92

Location: **RECORDED BY:**  
CIP 2002  
FOUND 3.54'  
COLUMBIAN  
RECORDED  
CIP 2002  
NB1-4-71 SET  
IN THE TOP OF A  
4.81' BY 4.81'  
CONCRETE  
FOOTING

Description: **POST**  
RECORDED IN  
SOUTHWEST  
CORNER OF THE  
INTERSECTION  
OF STREET  
AND PLUNGE,  
BOUNDARY BY  
FEET

Remarks: Orange County  
Surveyor's 2.04'  
Minimum Data

Latitude: 33.081641  
Longitude: 117.82282

Width: 3.54  
Height: 3.54

Site Name: CIP  
CIP Manager: CIP

Drawn: 3/18/02  
Checked: 03/05/02

Orange County - OC Public Works - Geomatics & Land Information Systems Section  
Vertical Control Data Sheet - O.C.S. 1996 Adjustment

Designation: **NB1-4-71** Date Acquired: **02/19/92**

Line #/Size: **02/0010** Date Verified: **02/19/92**

Post Recommendation Only: **3.54' by 3.54'**

Measurement Type: **Orange County Surveyor's 2.04' Minimum Data**

Establishment: **OC.S. 1996**

MARKER	MARKER	MARKER	MARKER	MARKER
FEET	MARKERS	FEET	MARKERS	MARK LEVELS
7.08	2.98	5.04	1.01	5.00

"To Bench" Description: **ON THE CORNER OF CIP 2002 FOUND 3.54' BY 3.54' CONCRETE FOOTING (STAMPED "NB1-4-71") SET IN THE TOP OF A 4.81' BY 4.81' CONCRETE FOOTING RECORDED IN SOUTHWEST CORNER OF THE INTERSECTION OF STREET AND PLUNGE, BOUNDARY BY FEET. INTERSECTION OF THE CENTERLINE OF STREET AND PLUNGE. INTERSECTION OF THE CENTERLINE OF PLUNGE AND PLUNGE. INTERSECTION OF THE CENTERLINE OF PLUNGE AND PLUNGE.**

O.C.S. Control Index Sheet: **02/19/92**

Map Page: **019C-2**

CIP Location: **Recreation Ranch**

Remarks: Benchmarks may have more than one height due to the datum adjustments, and you should. To avoid confusion, always state them as reference when using benchmark elevation values.

GEODETIC CONTROL  
OC PUBLIC WORKS

**ASSET MANAGEMENT**

- Utility/infrastructure and as-built mapping
- GPS data collection
- Database design and inventory reporting
- Capital improvement planning, budgeting and forecasting
- BIM (Building Information Modeling) and LiDAR integration/reporting
- Web/mobile application development
- Comprehensive GIS base map and imagery library

**SPATIAL ANALYSIS & MODELING**

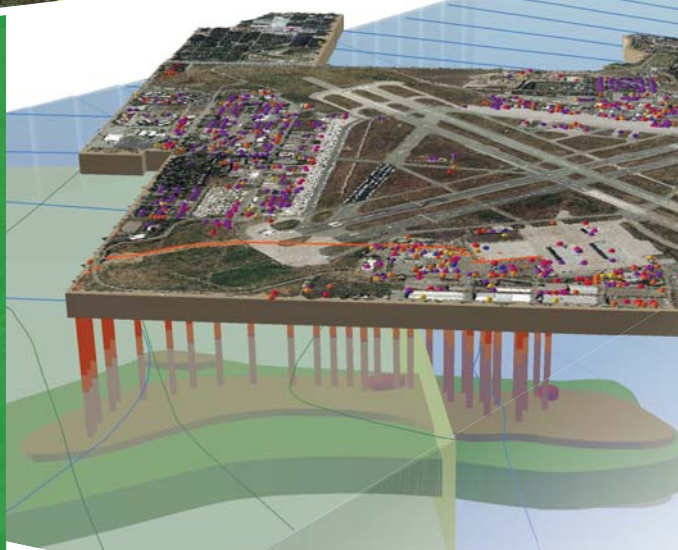
- Site suitability, land use and environmental analysis
- Surface and terrain analysis
- Viewshed/Line of sight analysis
- Cut/fill earthwork calculations

**SUSTAINABILITY**

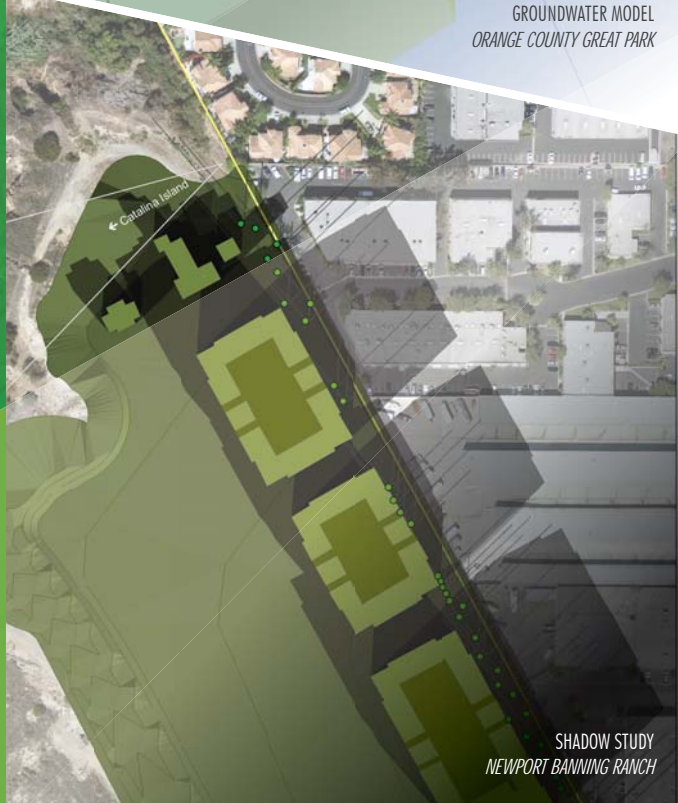
- LEED-ND GIS analysis for green neighborhood development credit
- Solar, shadow, slope, wind and geothermal analysis
- Geodesign integrated planning and analytics
- SB 375, AB-32, Green Building Initiative, CALGREEN compliance

**WATER RESOURCES**

- Watershed boundary and flood plain modeling
- Impervious surface analysis
- Stormwater and hydromodification analysis
- Storm drain and catch basin mapping
- Groundwater mapping



GROUNDWATER MODEL  
ORANGE COUNTY GREAT PARK



SHADOW STUDY  
NEWPORT BANNING RANCH